

MONITORING TECHNOLOGY ANNOUNCES MASSIVE TECHNOLOGY RELEASE FOR SMART ADVISOR SYSTEM

It has been two years since Monitoring Technology Corporation (MTC) reacquired its Smart Advisor product line. During this period, MTC has worked to reestablish support of its Smart Advisor customers and to infuse technology into the Smart Advisor platform. The release of this technology is significant and is intended to bring additional value to the Smart Advisor installed base.

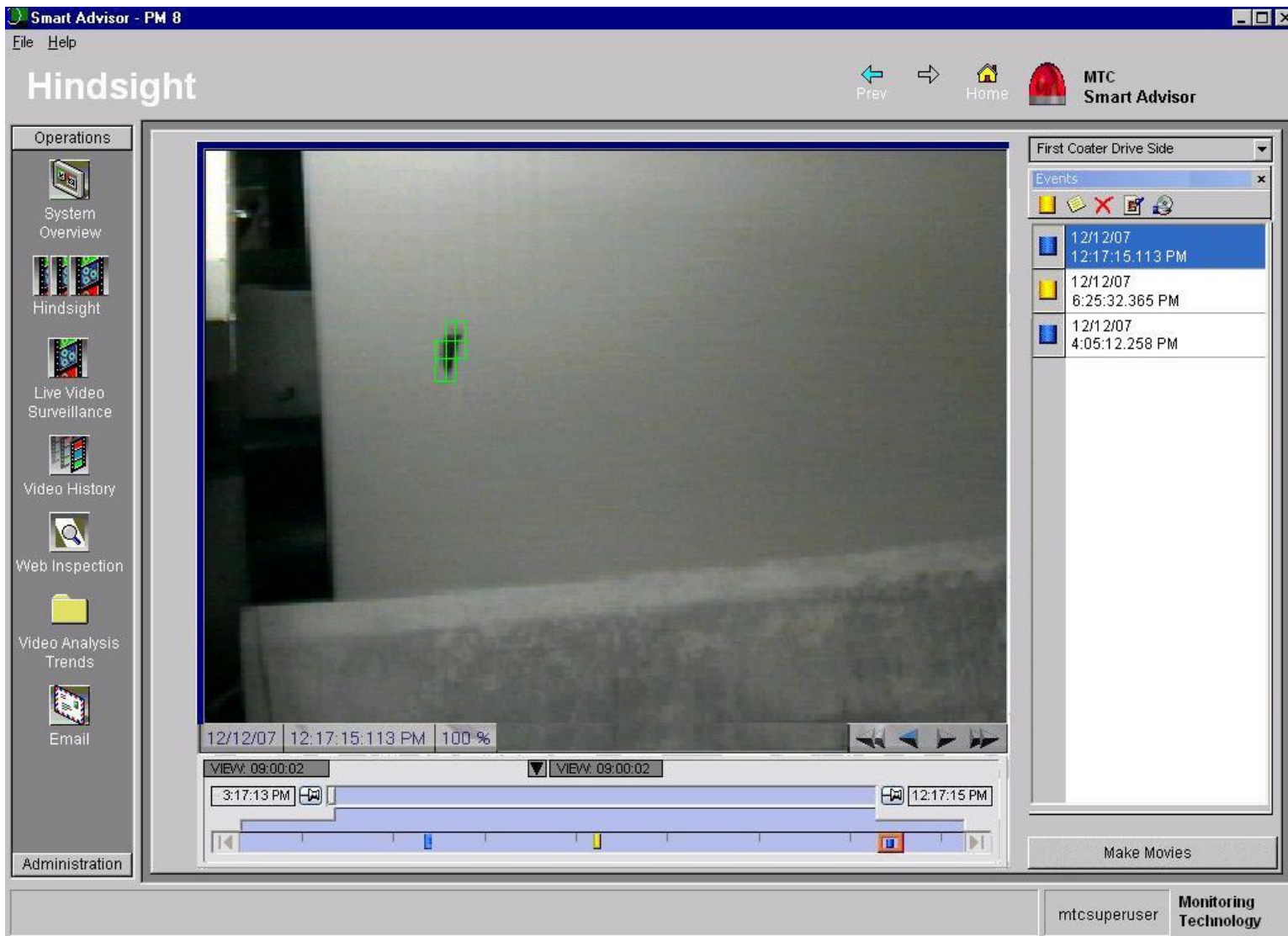
“I am so proud of MTC,” says Ray Trudeau, Vice President of Process Industries. “We are bringing more value directly to our customers than ever before. Over the past 24 months, we have reconnected with our customers, provided 24/7 support coverage, established an operating base in Europe to supplement our North American presence, and invested heavily in development. Our customers are seeing what MTC employees can do. In the last 10 months alone, we have received over 40 orders of our 3.1.0 release.”

The technology release consists of advances to the Smart Advisor software, compatibility with infrared and digital cameras, self-cleaning camera enclosures and bright, compact lighting.

Smart Advisor Software – 3.1.0 Release

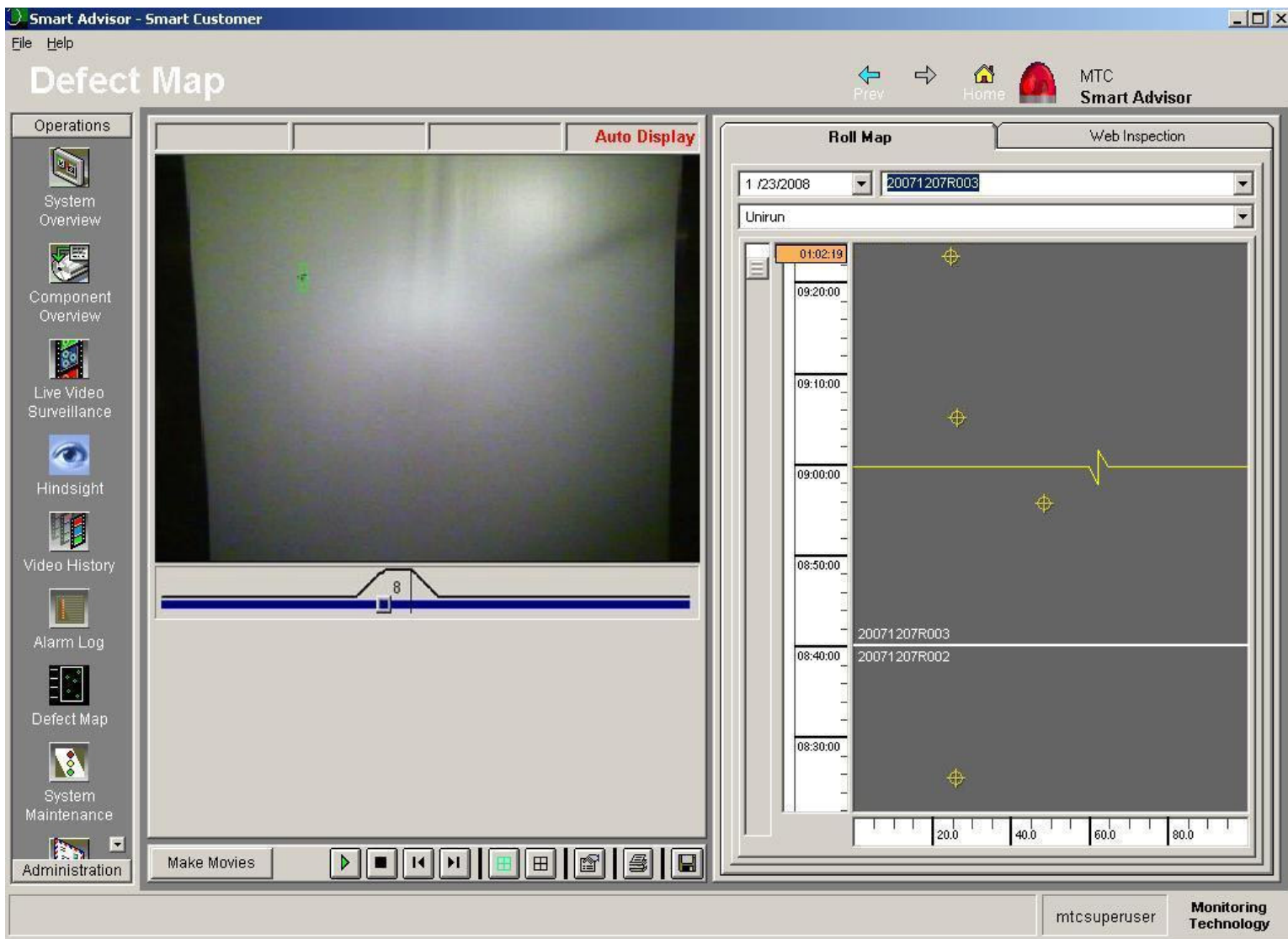
The 3.1.0 Release of Smart Advisor has several enhancements and three powerful new features: Hindsight ScanBack, Defect CD/MD Rollmap, and Digital Camera Compatibility.

Hindsight ScanBack



MTC's patent-pending Hindsight software has been incorporated into the Smart Advisor system. Smart Advisor has a new panel that allows the user to see live video and multiple hours of stored video from any camera on the system. With Hindsight technology, users can just scroll through the last few hours of recent video and then replay video frame by frame at any point. If something interesting is found (start of a wrinkle, draw angle change, etc.), users hit the Make Clip button and see synchronized video from all cameras.

Defect CD/MD Rollmap



The Smart Advisor Web Inspection capability has been expanded to include a defect map view. The software accepts roll identification numbers and yardage information, allowing a map with MD information. Each video view has a tool for applying distance information for an angled web, allowing a map with CD information. Maps are stored for several months, allowing downstream converting operations to view a map and videos of defects prior to running a roll. Defect videos can be easily offloaded to a memory stick (USB jumpdrive) for sharing with other operations.

Expanded Camera Compatibility

The 3.1.0 release allows multiple new camera inputs into the Smart Advisor. Infrared cameras, NTSC/PAL cameras, and digital gigabit Ethernet cameras that record from 200 to 3,000 images per second can all be connected to the Smart Advisor. Infrared cameras can be highly valuable for seeing thermal variations in the web and felts. Digital cameras with high frame rates are helpful when looking at tight locations where only a small amount of MD web is viewable or on very high speed winders.

CLEAR VIEW Self Cleaning Camera Enclosures



CLEAR VIEW was designed specifically for the most harsh and difficult of locations. “Our engineers at MTC used 3D solid modeling techniques to successfully design the unit. Beta testing was completed in a mill in the Southeastern US who had recently installed other “self-cleaning” type enclosures without success” says Mirek Radomski, MTC Senior Engineer. Learn more by clicking here:

[http://www.mtcsmartadvisor.com/Articles/Pinhole Enclosure Press Release.pdf](http://www.mtcsmartadvisor.com/Articles/Pinhole%20Enclosure%20Press%20Release.pdf)

Compact All Stainless Steel High Efficiency Lighting

MTC has developed two compact lights for even lighting of webs. Available in a 150W or 400W format, these lights are constructed from 100% stainless steel and have a 1-cm thick glass lens. The lights can actually support the weight of a tractor trailer truck. The lights are sealed and require no air supply. A special composite coating is used to dissipate heat, allowing a design that is IP66 (waterproof) rated.